



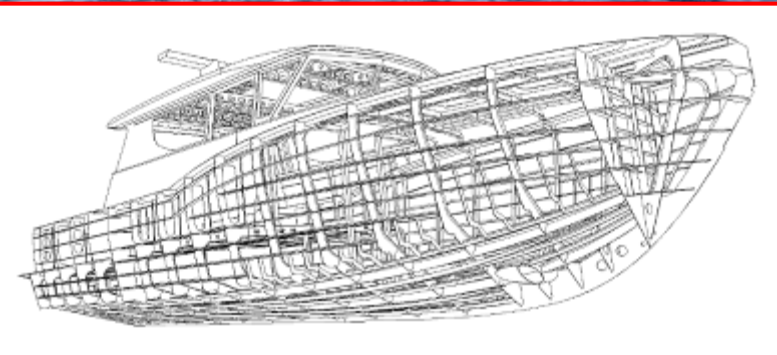
T40-Express Yacht

TACTICAL
CUSTOM BOATS

Elite Aluminum Performance Boats
designed for all Sea Conditions
engineered for Fast Cruise Speeds
delivering Uncompromising Comfort



Tactical Grade
Heavy Duty Aluminum Construction



GREGORY C. MARSHALL
NAVAL ARCHITECT LTD.





THRUST

Twin Seven Marine 627 HP performance outboard engines with contra rotating dual prop gear cases for exceptional power.

Delivering industry leading power and torque to maximize thrust so lower RPM ranges can be maintained while fast cruising.

ULTIMATE CONTROL

Super Sport Helm Wheel lets you control the window wipers, trim tabs, horn and auto pilot from the wireless buttons at your fingertips.

ZF Marine Joystick Maneuvering System (JMS). Three different joystick stations work seamlessly with the bow thruster, stern thruster, and engines to provide the ultimate ease in docking and tight quarter maneuvering.

Mercury Racing K-Plane trim tabs provide instant control and performance while cruising.





PROTECTION

Tactical's signature hybrid foam collar increases stability and flotation while providing side impact protection as well as extra protection for close quarters maneuvering.

In heavy sea operation it also acts as a "spray knocker" to reduce water on the windows so you can maintain clear visibility in rough water.



UNCOMPROMISING COMFORT

Full digital climate control , high tech sound dampening technologies, and Seakeeper Gyro Stabilization keep the environmental conditions quiet and comfortable.

Four forward facing full suspension Shockwave helm seats provide the ultimate ride in rough water.

A large powered sunroof , open aft bulkhead window and clean opening door extend the entertaining area for more enjoyment and use in this open living layout.

C-Zone digital switching control stations are located throughout the boat to operate all aspects of the décor and systems onboard.

The Tactical T-40 Express Yacht raises the benchmark in luxury finishing and super yacht details.



T40-EY Express Yacht Specifications

DIMENSIONS

- LOA: 40' 4" (not including outboards)
- Beam: 13' 7" (including foam collar)
- Maximum Draft: 2' 6" (hull only)
- Displacement: 25,000 lbs. Light Ship

ENGINES

- Twin Seven Marine 627HP outboard engines
- Contra rotating gear cases with dual props
- Cruising Speed: 35 knots (40 mph)

TANKS

- Fresh Water Tanks: Plastic (100 US Gallons)
- Fuel Tanks: Aluminum (650 US Gallons) extended fuel capacity
- Diesel Tank: Aluminum (50 US Gallons) generator/diesel heater
- Holding Tanks: Plastic (26 US Gallons)
- Hot Water Tank: Aluminum (6 US Gallons)

THRUSTERS:

- Bow and Stern Thruster c/w proportional controls controlled by joysticks
- Joysticks (3) at helm and on both sides of rear cockpit

STABILIZER

- Seakeeper 6 gyro stabilizer for improved comfort at low speeds and stabilized trolling

ROOF / MAST / ELECTRONICS

- Intellian TV Antennae mounted on mast
- FLIR M200 night vision camera mounted on mast
- ACR Model RCL-100D remote searchlight mounted on mast
- LED night driving light mounted on bow
- Motorized sunroof (Webasto)
- Motorized cockpit awning (Sure Shade)

WINDOWS, HATCHES, AND DOORS

- Lewmar deck hatches (2 x 20"/ 2 x 12") in foredeck
- Safety glass (tempered) windshield
- 4 tinted frameless side windows per side and flush mounted
- 3 non-tinted front forward facing windows
- Pull up/down blinds
- Rear hinged door with motorized drop down rear window (no mullion)

ANCHORING EQUIPMENT

- Maxwell RC10 deck mounted vertical anchor windlass
- Lewmar 20kg stainless steel anchor
- Quickline Ultra Flip Swivel
- Two station windlass control (foredeck and helm)
- 75' 5/16" chain and 200' x 5/8" three strand rope
- Stainless custom anchor roller assembly

FLOTATION COLLAR

- Wing hybrid foam flotation collar on both sides of deck for increased flotation and side impact resistance

AFT COCKPIT

- Steps from cockpit deck up to side decks
- Teak and carbon table on removable pedestal
- Folding transom lounge seats
- Kenyon electric BBQ and sink in transom cabinet
- Hot/Cold shower
- Fresh water wash down hose bib
- Salt water wash down hose bib
- Teak flooring



T40-EY Express Yacht Specifications

SALON

- Port galley (L-shaped)
- Fusion ® Entertainment System - MS-IP 700i / Bluetooth / Four interior speakers with sub cockpit speakers
- 43" LCD TV fold-down from ceiling cabinet over galley
- Teak Flooring

GALLEY

- Sub Zero® under counter fridge/freezer
- True Induction 120 volt two burner induction stove top
- Built-in Panasonic® convection microwave
- Stainless steel under mount galley sink

MAIN HELM CONSOLE AND CO-PILOT CONSOLE

- Four Forward facing Shockwave S3 high back/drop-down shock mitigating seats in black leather with red stitching and signature red "T" logo stitched into the seat headrest
- Formula 1 type steering wheel with wireless controls for window wipers, trim tabs, horn, and auto-pilot
- 4 Garmin GPSMAP 8617 chart plotter including chart chip
- 2 Garmin 201 VHF
- Garmin GSD 25 sonar box
- Garmin GMR 424xHD2 Radar
- Garmin GHP Reactor hydraulic auto pilot
- Garmin AIS600 Transceiver
- GXM 52 Sirius radio
- UltraDeck Marine flooring

MASTER STATEROOM AND SHOWER

- Island berth with power lift for underneath storage
- Memory foam mattress
- Step platforms on either side of berth for easy access
- Port and Starboard full height locker with shelves
- Port and Starboard bedside C-Zone digital switching control stations

MASTER HEAD

- Tecma X-Light carbon fiber toilet
- Custom carbon fiber sink

MECHANICAL SYSTEMS

- Northern Light 6KW generator with sound shield
- Mercury K-Plane Vessel Trim System (blue underwater lights mounted on trim tabs)
- Four Rule® Bilge pumps c.w float switches (2000 ghp auto/man)
- Whale® manual bilge pump

ELECTRICAL SYSTEM

- 12V DC house and engine systems
- Victron® (Lithium) 12V 2 @ 400 AH House Battery
- Energy1® (AGM) 2 @ 12v Engine Start Battery
- Engery1® (AGM) 12V Generator Start Battery
- 120V/25A Shore Power (Smart Plug)
- C-Zone® distributed power and digital switching
- Victron® 8KW Quattro inverter/200 amp charger
- Two ProNautic® Charger (engine and generator)
- Charles® Iso-Transformer 3.6 KVA
- High water bilge alarms

CLIMATE CONTROL

- Cruisair®12K air conditioning (salon)
- Cruisair®6K air conditioning (forward)
- Hurricane Diesel Hydronic furnace with outlets: 2@Gallery/Salon, 1@Helm, 1@Co-Pilot, 1@head, 2@ Master Stateroom

PAINT AND INSULATION

- Spray on mascoat sound insulation inside hull
- Alexseal paint on exterior of hull, side decks, foredeck and cabin sides
- Alexseal paint on mast—black
- Interlux® Tri-Lux antifouling bottom paint—black







Tim Charles, Principal & Sales • 604-309-8104 • Tim@TacticalCustomBoats.com
Dave Marsden, Shipyard Manager • 604-619-4374 • Dave@TacticalCustomBoats.com

Tactical Custom Boats.com

SHIPYARD and HEAD OFFICE

11580 Mitchell Road Richmond BC V6V 1T7 Canada • Tel: 604-325-6920 • info@tacticalcustomboats.com

Every Tactical Boat has Performance, Comfort, Safety, and Dependability built into its DNA